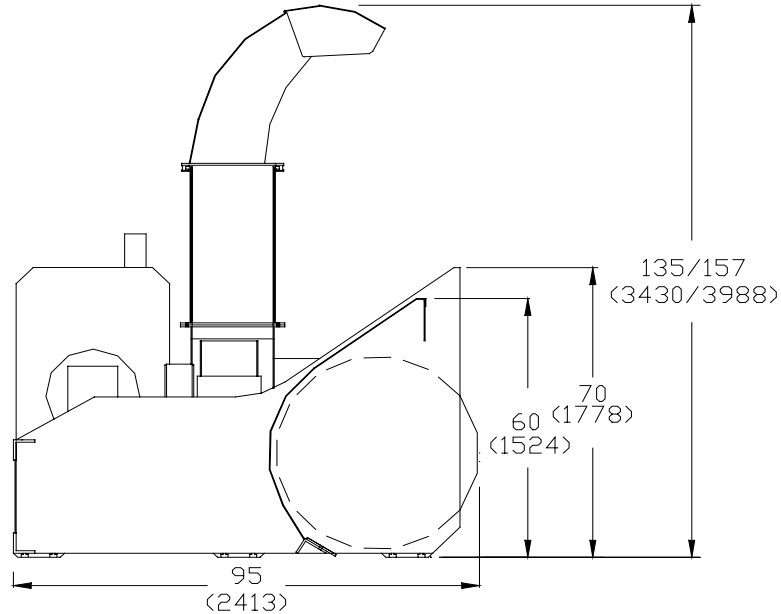


# SPECIFICATIONS



## SNOWBLOWER MODEL C-1016D

### PERFORMANCE\*

Up to 3300 tons/hour  
Casting distance up to 150 ft. (46m)

### WEIGHT AND DIMENSIONS

Overall height 135 in.-157 in. (3430-3988 mm)  
Overall width 112 in. (2845 mm)  
Working height 60 in. (1524 mm)  
Net weight (approx) 10,000 lb. (4536 kg)

### ENGINE

From 200 hp (149 kw) to 340 hp (254 kw) electronic  
Dry type air cleaner, muffler

### DRIVE LINE SYSTEM

Automatic clutch system, fully enclosed oil bath, gears  
and chain reduction, shear bolt protected and disc clutch  
torque limiter

### RIBBON AUGER

40 in. (1016 mm) diameter, flights 1/2 in. (12.7 mm)  
thick, 4 in. (102 mm) wide

### TRUCK LOADING CHUTE

18 in. (458 mm) diameter  
Rotation 300 °

\*Depending on snow conditions

### IMPELLER

40in. (1016 mm) diameter, five(5) easily replaceable  
concave blades

### IMPELLER CASING

High tensile steel, replaceable, hydraulic rotation

### SHOES/SCRAPER BLADE

Heat treated carbon steel, bolted and replaceable

### HYDRAULIC SYSTEM

Engine driven pump, electric solenoid valves

### INSTRUMENT PANEL

Detachable including: tachometer, hourmeter,  
voltmeter, oil pressure, water temperature, and fuel  
level gauges

### OPTIONAL EQUIPMENT

Hydraulically extensible chute: 22 in. (560 mm)  
Rubber scraper blade

### CARRIER REQUIREMENT

A front end wheel loader 2.6 cubic yards  
(2 cubic meters) minimum capacity

04-04

At CONTANT Inc., our policy is to meet the highest quality standards. In order to improve our products, changes in design or alterations might occur, it will in no way alter quality or efficiency of our equipment.

## CONTANT INC.

6310 Boul. Des Mille-îles  
Laval, Qc. H7B-1E5  
Tel : (450) 666-6368 or 1-800-CONTANT  
Fax : (450) 666-0626  
WWW.CONTANTLAVAL.COM

Distributed by :